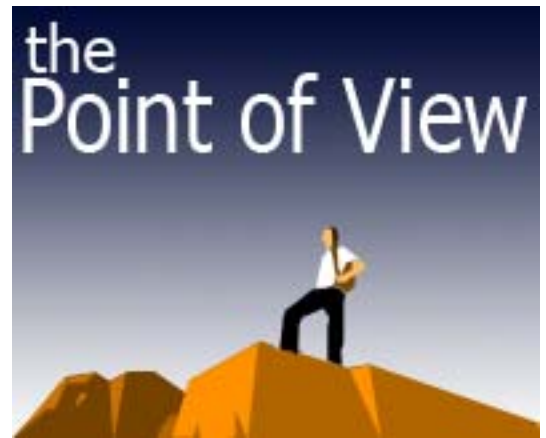




Orlando



Volume 3 Number 9

September 2010



**EVEN IF YOU'VE NEVER
NEEDED HELP BEFORE**

DIAL

2-1-1

LIVE UNITED.



Everyone
needs help
from time to
time.

Find out more
about United
Way's 2-1-1
program, page
8.

For Manheim Orlando's Employees and Internal Distribution only

AUGUST STATISTICS

SALE # 31	Monday Sale			Tuesday Sale		
	# Offered	# Sold	Sale %	# Offered	# Sold	Sale %
	256	183	71.5%	4,196	2,254	53.7%
P.S.I	Dealer Attendance			Dealer Attendance		
	In Lane	On Line	Total	In Lane	On Line	Total
463	202	499	701	1,627	907	2,534

OPERATIONS	
Week Ending: 8/07/10	
Vehicles Moved:	14,981
Stocked In	3,270
Inspected	1,951
Detailed	1,428
Paint/Body	106

SALE # 32	Monday Sale			Tuesday Sale		
	# Offered	# Sold	Sale %	# Offered	# Sold	Sale %
			0.0%	5,814	3,179	54.7%
P.S.I	Dealer Attendance			Dealer Attendance		
	In Lane	On Line	Total	In Lane	On Line	Total
728			0	2,198	1,782	3,980

OPERATIONS	
Week Ending: 8/14/10	
Vehicles Moved:	19,964
Stocked In	3,074
Inspected	2,139
Detailed	2,060
Paint/Body	163

SALE # 33	Monday Sale			Tuesday Sale		
	# Offered	# Sold	Sale %	# Offered	# Sold	Sale %
	103	78	75.7%	4,271	2,108	49.4%
P.S.I	Dealer Attendance			Dealer Attendance		
	In Lane	On Line	Total	In Lane	On Line	Total
600	148	331	479	1,670	1,018	2,688

OPERATIONS	
Week Ending: 8/21/10	
Vehicles Moved:	19,964
Stocked In	3,817
Inspected	2,144
Detailed	1,543
Paint/Body	94

SALE # 34	Monday Sale			Tuesday Sale		
	# Offered	# Sold	Sale %	# Offered	# Sold	Sale %
	255	221	86.7%	4,952	2,183	44.1%
P.S.I	Dealer Attendance			Dealer Attendance		
	In Lane	On Line	Total	In Lane	On Line	Total
599	212	352	564	1,622	966	2,588

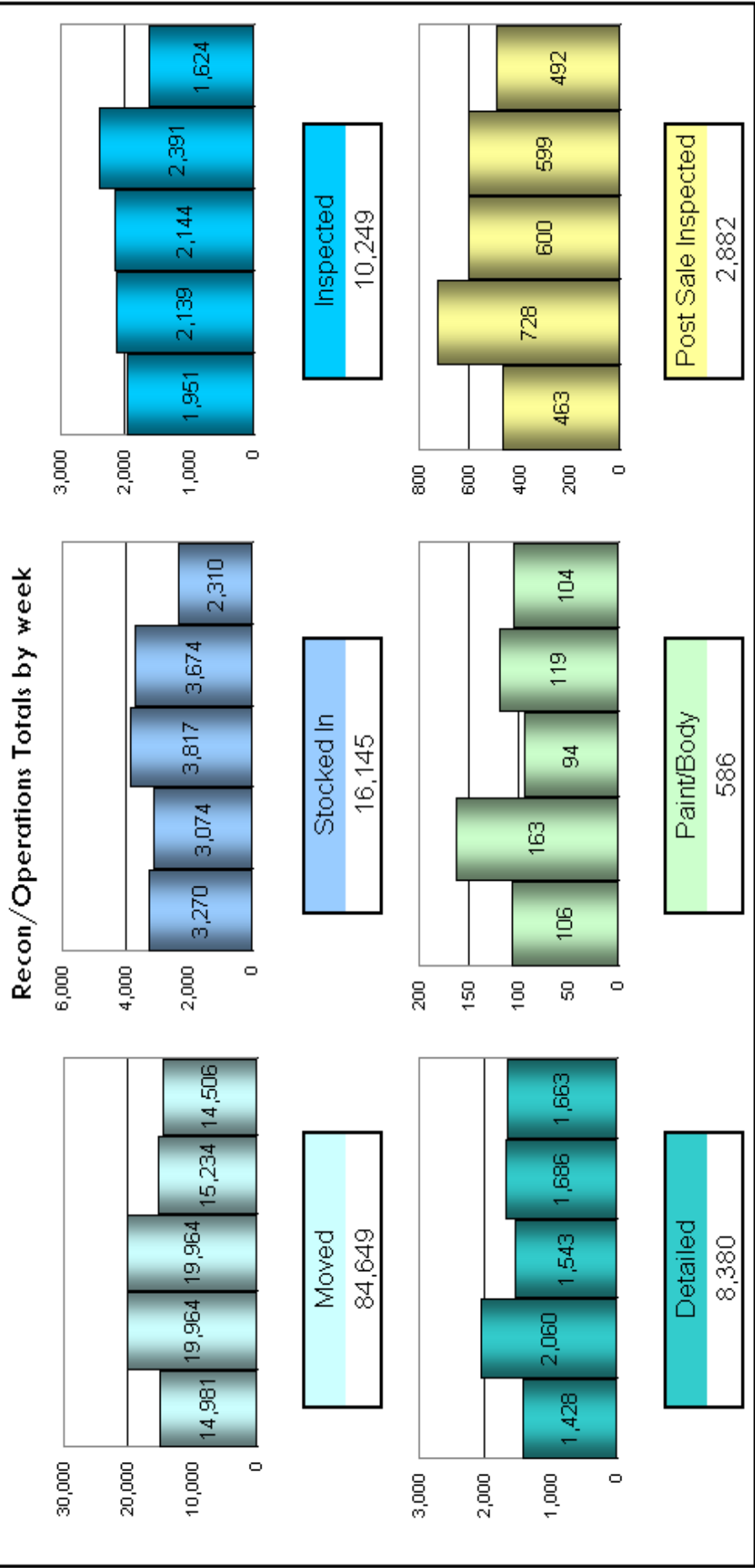
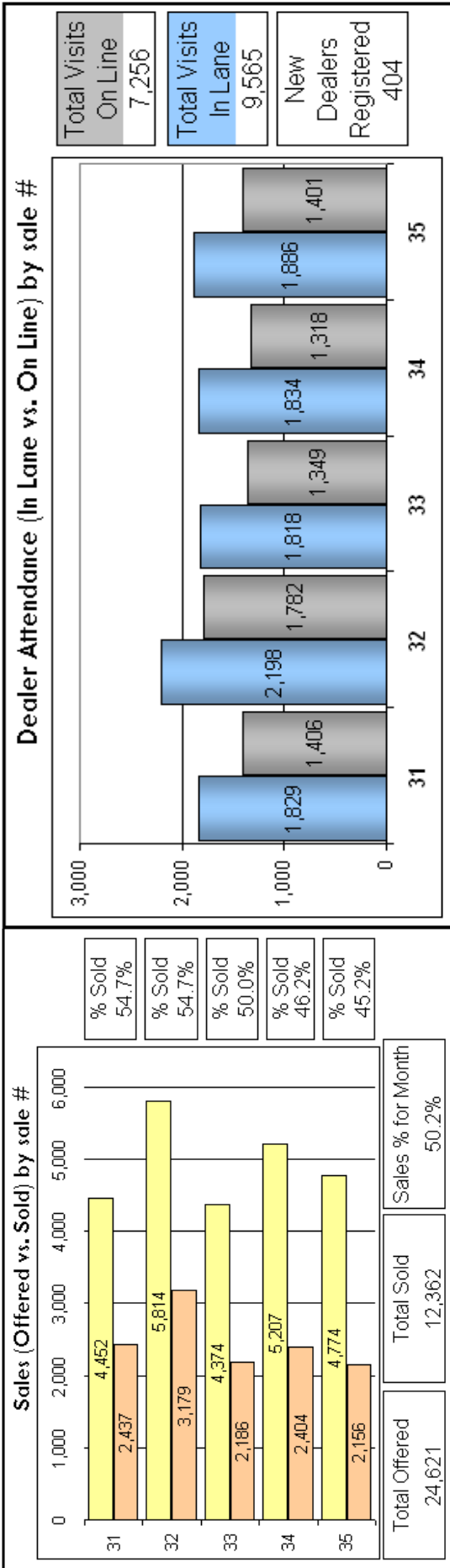
OPERATIONS	
Week Ending: 8/28/10	
Vehicles Moved:	15,234
Stocked In	3,674
Inspected	2,391
Detailed	1,686
Paint/Body	119

SALE # 35	Monday Sale			Tuesday Sale		
	# Offered	# Sold	Sale %	# Offered	# Sold	Sale %
	4,457	1,918	43.0%	317	238	75.1%
P.S.I	Dealer Attendance			Dealer Attendance		
	In Lane	On Line	Total	In Lane	On Line	Total
492	221	490	711	1,665	911	2,576

OPERATIONS	
Week Ending: 9/04/10	
Vehicles Moved:	14,506
Stocked In	2,310
Inspected	1,624
Detailed	1,663
Paint/Body	104

Perfect Lanes by week	
Week /	Lanes
31 /	2, 3, 4, 5, 7, 11, 15, 16, 17, 18, 31, 35
32 /	2, 3, 4, 7, 11, 12, 15, 17, 18, 19, 21, 23, 24
33 /	1, 2, 3, 4, 5, 7, 11, 12, 13, 17, 18, 19, 20
34 /	1, 2, 4, 6, 7, 11, 12, 14, 15, 16, 18, 31
35 /	1, 2, 3, 4, 5, 6, 7, 9, 10, 11, 12, 13, 14, 15, 16, 17, 18

Congratulations Manheim Orlando on your first perfect week. Every lane that ran during sale 35 was perfect! Great job!



Chia Seeds – The Ancient Food of the Future

Chia seeds are the richest non-marine whole foods source of Omega and dietary fiber currently known to man. Chia is familiar to most of us as a seed used for the novelty of the Chia Pet, a clay animal with sprouted chia seeds covering their bodies.

Little is known, however, of the seeds tremendous nutritional value and medicinal properties. One of the exceptional qualities of the chia seed is its hydrophilic properties, having the ability to absorb more than 12 times its weight in water. Its ability to hold on to water offers the ability to prolong hydration, something to think about if you work outside in the heat all day. They also offer an excellent protein source so with all this being said it improves digestion and natural detoxification.

They promote cardiovascular health; it has essential Omega 3 oils. It's one of the richest vegetable sources, it has approximately 3 to 10 times the oil concentrations of most grains and 1 ½ to 2 times the protein concentrations of other grains.

Chia seeds are rich in the unsaturated fatty acid, linoleic, which the body can not make on its own. This is important to your respiration and

for your vital organs; it makes it easier for oxygen to be transported in the blood stream.

It's a dieter's dream food because of the high fiber content and its ability to reduce blood sugar levels after each meal inhibiting the appetite thus making it the perfect food for healthy and effective weight loss. You just sprinkle them in what ever you eat or drink, they do not change the taste of any of your favorite foods.

If you are interested in more facts and nutritional value of these seeds just goggle chia seeds and read for yourself how awesome this super food is!

Again talk to your doctor before you begin any type of exercise or diet program to make sure have a green light to go.....

Talk to you next month!!!

Liz Schneider.



Announcements

Congratulations to Kenny & Andrea Shepherd, they are proud parents of their first born, Blake Thomas Shepherd.

Blake was born on August 5th, weighing 8 lb 10 oz and 20 in long. Andrea works in Central Posting & Kenny works for Dent Wizard. Congratulations Guys!!



Safety Matters by: John Woodhouse (Safety Manager)

This month's topic is PPE. Better known as Personal Protective Equipment.

Working at Manheim Orlando presents different types of hazards depending on which area you work in. Some of the different types of PPE used at this location are safety glasses, hearing protection, respirators, gloves and seatbelts

along with a few others. PPE is available to all employees at all times. If you don't have the proper PPE, please ask your supervisor or contact the safety department.

PPE is necessary to prevent injuries or illnesses, both short term and long term. Did you know that if you are injured and the result of your injury was because you didn't wear the proper PPE, your workers compensation benefits could be reduced?

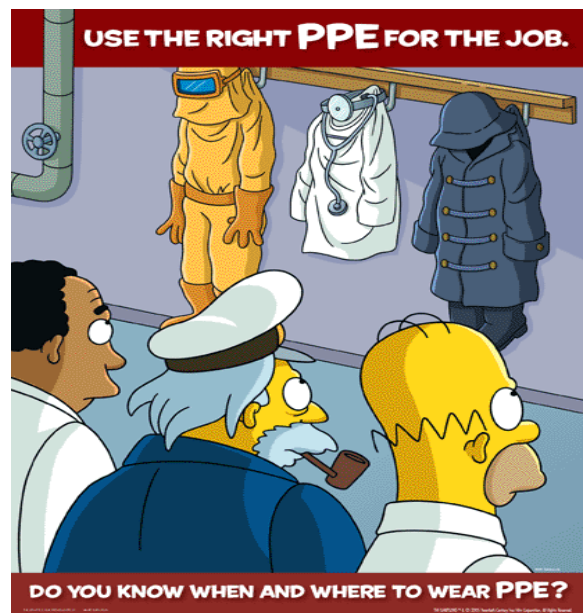
Safety glasses are probably the most widely used PPE in use at Manheim Orlando. Although you pride yourself on the care you take to do your job safely, it only takes one accident to partially or permanently blind you. I don't know about you, but I can't imagine not being able to see. Not seeing my family, watching sports, sunsets, etc...doesn't sound like much fun to me.

Consider the many things you may do that involve flying particles: chipping, grinding, sanding, brushing, sawing, spraying chemicals, etc...Even a speck of dust flying from a power sander can injure your eye. Even if you're not the one doing the actual work, you need eye protection from the workers performing their jobs near you.

I'm sure you know that's it's dangerous to not wear eye protection. But they are uncomfortable, fog up and sometimes look funny. Try different sizes and styles until you find a pair that fits you. For glasses that fog up, try using an anti-fog spray on the lenses. Replace glasses or goggles that are scratched. It

not only makes it harder to see, they weaken the glasses so they may not handle an impact like they were designed for. Replacing your glasses or goggles frequently may seem like a nuisance, but it's easier than replacing your eyes.

Whatever job you do, there is safety eyewear designed just for that job. And there are styles available in many types that you wouldn't be ashamed to wear in public. Keep your glasses or goggles in good condition; keep them on, every day. In the long run, they'll help you "look" good on the job.



September Employee/Training Opportunity Calendar

Mon	Tue	Wed	Thu	Fri
		1 	2	3 
6	7 8 Time Management 10am—3pm Lunch Provided 	9 Time Management 10am—3pm Lunch Provided		10 Computer Basics 1pm-4pm  Payday / Review time card 
13	14 15 Communication Skills 10am—3pm Lunch Provided 	16 Communication Skills 10am—3pm Lunch Provided	Fact Finding Tour 	17 
20	21 22 29 Performance Excellence 	23 Performance Excellence 	24 Excel 1 8am—12pm IF Office 	24 Excel 1 8am—12pm IF Office  Payday / Review time card 
27	28 Performance Excellence 	30 Performance Excellence	Team Manheim Customer Service 10am—3pm Lunch Provided 	

To sign up for classes please contact:
 Toni Pennington (toni.pennington@manheim.com) 407-905-8466



Find Your Local 2-1-1 Service

Every hour of every day, hundreds of people need essential human services - they are looking for training, employment, food pantries, help for an aging parent, addiction prevention programs for their teenage children, affordable housing options, support groups and ways of becoming part of their community. 2-1-1 allows people to give help and to get help.

2-1-1 is an easy to remember telephone number which connects people with community services and volunteer opportunities. In 2009, 2-1-1 services in the United States answered more than 16.2 million calls. The implementation of 2-1-1 is spearheaded by United Ways and information and referral agencies in states and local communities. United Way Worldwide (UWW) and the Alliance for Information and Referral Systems (AIRS) strongly support federal funding so that every American has access to this essential service.

LIHEAP ASSISTANCE

Division of Housing and Community Development

Low-Income Home Energy Assistance Program

To inquire about assistance from the Low-Income Home Energy Assistance Program, locate the county in which you live and contact the local provider at the telephone number listed.

Applications are only available by contacting the local providers listed below

Applications are not available on the internet

Lake

Lake Community Action Agency, Inc.: (352) 357-5550

Orange

Orange County Youth And Family Services Division

- o Main Office: (407) 836-8476
- o Bithlo: (407) 568-4025
- o Bridges: (407) 866-4701
- o East Orange: (407) 249-6279
- o Hal Marston: (407) 836-8484
- o Holden Heights: (407) 317-7635
- o Maxey: (407) 654-5161
- o Lila Mitchell: (407) 296-5158
- o Pine Hills: (407) 254-9100
- o Southwood: (407) 355-5764
- o Taft: (407) 251-2434
- o Willow Street: (407) 884-9430

Seminole

- City of Sanford: (407) 688-5160, ext 5166 or 5167

Sumter

- Mid Florida Community Services, Inc.: (352) 793-3114

Osceola

- Osceola County Council On Aging, Inc.: (407) 846-85

Discounted Food

Angel Food Ministry

200 Tubb St.

Oakland, FL

Angel Food Ministry
201 S. Clarke Road
Ocoee, FL 34761
www.angelfoodministries.com
407-451-8619
Basic Box \$30 will feed a family for a week.
Must order in advance.
www.angelfoodministries.com
Locations all over Florida

Help with bills for West Orange residents.

St. Vincent De Paul
West Orange County Crisis Assistance
407-245-7307

Food Pantries

Catholic Charities of Orlando Inc.
Family Assistance Office
1771 N Semoran Blvd., Suite B
Orlando, FL 32807
407-658-1818

CEPA First Harvest Food Bank Inc.
4921 Old Winter Garden Rd.
Orlando, FL 32811
407-253-4883 Warehouse
407-296-0245

Christian Help Foundation
450 Seminola Blvd.
Casselberry, FL 32707
407-834-4022

Christian Sharing Center Inc.
600 N Highway 17-92, Suite 120
Longwood, FL 32750
407-260-9155

Christian Service Center For Central Florida Inc.
808 W Central Blvd.
Orlando, FL 32805
407-425-2523

Christian Service Center For Central Florida Inc.
West Orange Office
300 W Franklin St.
Ocoee, FL 34761
407-656-6678

Christian Service Center For Central Florida Inc.
Winter Park Office
1600 S Orlando Ave
Winter Park, FL 32789
407-628-1692

Community Service Center Of South Orange
County Inc.
621 Wilks Ave.
Orlando, FL 32809
407-851-5920

Jewish Family Services Of Greater Orlando Inc.
2100 Lee Rd.
Winter Park, FL 32789
407-644-7593

Joy Metropolitan
Community Church
2351 S Ferncreek
Ave.

Orlando, FL 32806

407-894-1081



Osceola Community Action

700 Generation Point

Kissimmee, FL 34744

407-846-8532

Sadie Holmes Help Service Inc.

1301 E State Road 436

Altamonte Springs, FL 32701

407-332-7639

Salvation Army Of Orange County

Emergency Services Department And Women
And Children's Transitional Center

416 W Colonial Dr.

Orlando, FL 32804

407-423-8581

West Orlando Baptist Church

1006 E. Crown Point Rd.

Ocoee, FL 34761

3rd Saturday of each month

8:30 a.m. -11a.m. or food runs out.

Chief Corner Stone Love Outreach

820 South Park Ave.

Winter Garden, FL 34787

Tuesdays

407-877-9555

Are you in crisis? Please call 1-800-273-TALK

Are you feeling desperate, alone or hopeless? Call the National Suicide Prevention Lifeline at 1-800-273-TALK (8255), a free, 24-hour hotline available to anyone in suicidal crisis or emotional distress. Your call will be routed to the nearest crisis center to you.

- Call for yourself or someone you care about
- Free and confidential
- A network of more than 140 crisis centers nationwide
- Available 24/7

Red Nacional de Prevención del Suicidio

Cuando usted llama al número 1-888-628-9454, su llamada se dirige al centro de ayuda de nuestra red disponible más cercano. Cuando el centro contesta su llamada, usted estará hablando con una persona que le escuchará, le hará preguntas y hará todo lo que esté a su alcance para ayudarlo. Para información en español haga clic aquí.

For Hearing and Speech Impaired with TTY Equipment:

1-800-799-4TTY (4889)



Orlando 

Health Fair

When?: October 14, 2010
9am—12pm

Where?: In the sale lanes

What will be there?:



- Blood Pressure Screening
 - Glucose Screening
 - Massages
- Flu Shots (*bring Aetna Medical card or Medicare Card please*)
- Fire Safety and Self Defense
- Magellan Health Services
- Health Central Hospital
 - Eye Care
 - YMCA
- Skin Cancer Screening
 - Orthodontist
 - Chiropractor
 - Dentists



BEAT the Flu BUG



Get your Shot!

And much more!





Cox Employee Disaster Relief Fund

Providing a Helping Hand to Our Fellow Employees in Need

Lend a Helping Hand

September 1, 2010

When Hurricane Katrina struck in 2005, it struck the cities, homes and even the hope of many of our fellow employees, but Cox came together as a company to provide relief. The Cox Employee Disaster Relief Fund (CEDRF) was created to aid employees across the company who were impacted by Katrina and other disasters. Since then - thanks to tremendous support from employees like you - CEDRF has provided more than \$3 million to assist more than 1,500 people affected by hurricanes, tornadoes, wildfires and other devastating events.

Today, supporting our employees remains one of our most important values, and we want to help advance CEDRF's mission of providing relief to Cox employees in need due to disasters. The Cox family is committed to supporting our employees; in fact, several members of the family have made significant donations to CEDRF to provide help where it's needed. However, the Fund still needs our help. Make a donation to CEDRF today - when disaster strikes, it helps to know relief is on the way. You have the option to give via payroll deduction, check or credit card. CEDRF is a 501(c)(3) organization, so 100% of your contribution is tax-deductible. To date, due to the generous support of Cox, 100% of the funds raised have gone towards helping our fellow employees in need.

Giving Through Payroll Deduction

Visit <http://disasterrelief.coxenterprises.com> if you would like to pledge via payroll deduction during our office's annual employee giving campaign. **Please note:** employees may pledge only once each year via payroll deduction and must use the pledging site above. Payroll deduction pledges submitted in 2010 will begin in January 2011.

Giving Through Check or Credit Card

Visit www.coxenterprises.com/relief for information on how to make a contribution via credit card (American Express, Visa or MasterCard).

With this option, you may give as many times as you would like, and you may do so anytime during the year. To Donate by check please make checks payable to Cox Employee Disaster Relief Fund, Inc. and mail to:

Leigh Ann Launius
Cox Employee Disaster Relief Fund
Cox Enterprises, Inc.
17th Floor
6205 Peachtree Dunwoody Road
Atlanta, GA 30328

Make a copy of your check as your tax record. In accordance with IRS regulations, an acknowledgement letter will be mailed for all gifts of \$250 or more. Please be sure that your NAME and ADDRESS are included with your donation.

Thank you for your support of this program, which has helped and will continue to help so many of our employees in need. Visit insite.coxenterprises.com/CEDRF for more information about the Cox Employee Disaster Relief Fund. You may email any questions to CEDRF@coxinc.com. For information on how to prepare for a disaster, visit CoxAlert.com.



Cox Employee Disaster Relief Fund

Frequently Asked Questions

The Cox Employee Disaster Relief Fund (CEDRF) is a 501(c)(3) charitable organization created in 2005 in response to Hurricane Katrina for the purpose of providing financial assistance to Cox employees with unmet, emergency needs resulting from a disaster. CEDRF is funded by donations from Cox employees, Cox companies and others. To date, CEDRF has distributed more than \$3 million to assist more than 1,500 employees who have suffered as a result of hurricanes, tornadoes, wild fires, house fires and other disasters.

What qualifies for support from the Cox Employee Disaster Relief Fund?

Unanticipated, urgent needs of an active Cox employee resulting from a disaster that cannot be met through personal resources, public programs (such as Red Cross shelters), or Cox Enterprises programs. Visit <http://coxalert.com> to learn how to prepare for or respond to a crisis in your area.

How do I apply for assistance to the Cox Employee Disaster Relief Fund?

When a disaster occurs, promptly contact your local HR manager or local benefits coordinator for information on how to submit an application for assistance.

How are applications for support reviewed?

Applications for assistance submitted to CEDRF through local HR managers are reviewed by an independent committee appointed by the CEDRF board of directors. Assistance provided will be based upon the type and extent of damage suffered, number of dependents, insurance coverage, and the availability of funds from other resources.

What is the connection between the Cox Employee Disaster Relief Fund and Cox Enterprises?

Cox Enterprises has generously sponsored CEDRF, but CEDRF is not actually a part of Cox Enterprises. Rather, it's a separate charitable organization governed by its own board of directors.

How can I contribute to the Cox Employee Disaster Relief Fund?

There are two ways to contribute to CEDRF:

1. Credit card contributions may be made anytime by visiting <http://coxenterprises.com/relief>.
2. You may also contribute via payroll deduction during your company's employee giving campaign. Pledged amounts will be deducted from the appropriate pay-period(s) in the subsequent calendar year. To pledge a one-time or per-pay-period contribution to CEDRF via payroll deduction, visit <http://disasterrelief.coxenterprises.com>

How much of my donation goes directly to the affected employees?

Through the generous support of Cox, 100% of the funds raised through CEDRF have gone towards helping our fellow employees in need.

Is my donation tax-deductible?

Yes, CEDRF is a 501(c)(3) charitable organization, so 100% of your contribution is tax-deductible.

I have questions about the Cox Employee Disaster Relief Fund. Who should I contact?

Email your questions to CEDRF@coxinc.com.

I'm having problems with the Cox Employee Disaster Relief Fund pledge sites. Who should I contact?

Contact the CSC at 678-645-4357 or via email at CSC@coxinc.com.



Cox Employee
Disaster Relief Fund

Providing a Helping Hand to Our Fellow Employees in Need



When Disaster Strikes, It Helps to Know Relief is on the Way.

When you give to the Cox Employee Disaster Relief Fund, you help provide financial assistance to Cox employees and their families affected by hurricanes, tornadoes, wildfires and other disasters.

Lend a helping hand to your fellow employees in need. Support the Cox Employee Disaster Relief Fund today.

For information on how to give, visit <http://insite.coxenterprises.com/CEDRF>



Cox Employee Disaster Relief Fund

Providing a Helping Hand to Our Fellow Employees in Need

Upcoming Events

September



November

September 15th to October 15th - Cox
Employee Disaster Relief Fund Open Enrollment

October

October 1st to 31st - Come Together West
Orange

Once upon a time, families would gather at the end of a long day to eat dinner together, neighborhoods would have block parties to catch up and enjoy an evening and communities would unite to help a family in need. Today, we are torn in a million directions without time to connect like we used to.

The Roper YMCA Family Center is turning back the clock to give you the opportunity to come together to bond not only as a family, but as a neighborhood and a community. We personally invite you, your friends and family to join us in October for a month long celebration of each other. Take the time to have fun and get healthy at the same time. Participate in a master group exercise class, take your kids to our Fall Festival or invite a friend to join you in a small personal training group. Together, we are strengthening the foundation of our community.

October 1st - Manheim Orlando's Biggest Loser Competition kick off. This 12 week challenge will start in HR. Please come by HR for details.

October 9th - Community in Pink to be held Winter Garden Village at Fowlers Grove

October 21st - Blood Drive! Come out and support Florida's Blood Centers on the Big Red Bus. Central Florida Auto Auction will be hosting them the same day.....we are sure we can give more than they can! Come out and donate, you will be saving a life.

October 25th - Office and Pumpkin decorating contests will be judged. Judges will be making

November 22nd - Thanksgiving Centerpiece contest judging at 3pm. Please have centerpieces in the main lobby no later than 2pm.

November 22nd - Christmas Trees for decorating contest to be delivered.

December

December 4th - Manheim Orlando Holiday Party

December 6th- Christmas Tree decorating contest judging starting at 3pm.

Please join
HEALTH CENTRAL AND WINTER GARDEN
VILLAGE AT FOWLER GROVES
for the *second annual*
COMMUNITY
in Pink

5K race, Fun Walk and family festival
featuring free health screenings, entertainment,
prizes and fun!

Saturday, October 9, 2010
WINTER GARDEN VILLAGE AT FOWLER GROVES
7:30am - 12:00pm

5K race begins at 7:30am ☉ Fun Walk begins at 10am
5K registration at 6:30am ☉ Fun Walk registration at 9am

*The Fun Walk encourages you to follow a route and
visit stores, have a card stamped at each location and enter
the completed card into a prize drawing.*

5K race ~ \$25 ☉ Fun Walk ~ \$10

Please visit healthcentral.org/communityinpink
for more information and to register online.

All proceeds will benefit the Health Alliance Family Care Center in Winter Garden
to offset the cost of mammograms for eligible women in our community.



Orlando



11801 West Colonial Drive
Ocoee, FL 34761

Phone: 407-656-6200

Phone: 877-888-FAAO

Fax: 407-656-7846

www.faa.com

For Employees, By Employees

Our goal is to increase employee involvement at Manheim Orlando by informing everyone about what is happening here and the activities we are involved in. We believe knowledgeable employees can help to shape and guide the continued growth of Manheim Orlando as a place to work, do business, and be a responsible member of the communities in which we operate.

If you would like to submit an article or announcement to the Point of View, please drop it by the Point of View box located in the HR Department or email freddy.clark@manheim.com or toni.pennington@manheim.com.

One more thing, please share these copies of the Point of View with your co-workers. We can save trees by sharing!

*To all Manheim Orlando Employees,
Thank you for all
you do to
keep our customers
and staff safe!*

Alan Wilby

For Manheim Orlando's Employees and Internal Distribution only